

## Report to the Community

Fiscal Year 2015 - 2016

*Cover artwork was created by Apalachee clients participating in art therapy.*

## Our Mission

It is the mission of Apalachee Center to empower persons served to improve the quality of life for themselves and their families through the provision of quality behavioral healthcare with unrelenting attention to clinical excellence and safety.

## Board of Directors

**Harry Falk**  
Chair

**Kim Barnhill**  
Vice Chair

**Oscar Howard**  
Immediate Past Chair

**Denise Pouncey Hannah**  
Member at Large

**Sterling Bryant, Jr.**  
**Raymond Capelouto**

**John Dailey**  
**Forrest Davis**

**Edwin Fleet**  
**David Harvey**

**Kenneth Hosford**  
**Rufus Jefferson**

**Thomas Joiner**  
**Stephen Lanier**

**Lou Miller**  
**Delorise Rush**

## Management Team

**Jay Reeve, PhD**  
President, Chief Executive Officer

**Sue Conger, MSW**  
Chief Operations Officer

**Patricia Convertino, MS**  
Chief Quality Officer

**Teri Grace**  
Chief Information Officer

**Guy Johnson**  
Chief Facilities Officer

**Virginia H. Kelly, CPA**  
Chief Financial Officer

**Candy Landry**  
Chief Human Resources Officer

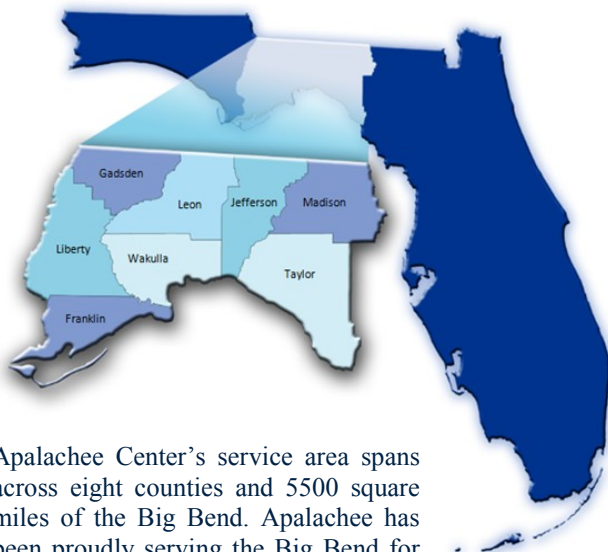
## Our Services

Apalachee Center, Inc. offers a full continuum of care services, serving clients across the lifespan who are coping with mental illness, substance abuse, emotional and behavioral problems, with a special commitment to serving severely and persistently mentally ill individuals who suffer from schizophrenia and severe mood disorders.

It is the **Vision** of Apalachee Center to serve as an integral component of the community's healthcare system.

For a complete listing of services, go online to  
[www.apalacheecenter.org](http://www.apalacheecenter.org)

## Our Service Area



Apalachee Center's service area spans across eight counties and 5500 square miles of the Big Bend. Apalachee has been proudly serving the Big Bend for the past 68 years.



Services Accredited by the Joint Commission on Accreditation of Healthcare Organizations



## **A Message to the Community**

Welcome, and thanks for taking the time to read Apalachee Center's 2015/2016 Report To The Community. As the largest comprehensive behavioral healthcare organization in the Big Bend area, Apalachee Center is dedicated to the mission of helping North Floridians recover from episodes of substance abuse, mental illness, emotional distress, and behavioral challenge every day.

There were three developments in 2015/2016 that defined this year at Apalachee Center. After years of planning, in August of 2015, Apalachee Center was contracted to provide management and leadership for Tallahassee Memorial Behavioral Healthcare Center. This meant that Apalachee's Chief Quality Officer, Patty Convertino, was contracted to serve as Tallahassee Memorial Behavioral Health Center's Service Line Administrator, and as Apalachee's CEO, I became part of the expanded Executive Team at TMH. Patty and I continue to be full-time Apalachee Center employees, and Apalachee and TMH remain wholly independent institutions, but this arrangement has allowed Apalachee to really move forward in ensuring that behavioral and physical healthcare in this region can function in newly integrated ways.

Another big change was the implementation of electronic medical records. Apalachee's move from paper to electronic record-keeping and billing started in earnest at the end of September 2015, and continued through the year. There were a lot of bumps in the road as Apalachee learned the system, and learned to work with our vendor – and as our vendor learned to work with us. It was a particularly stressful year for our staff, especially those charged with keeping records and billings up-to-date, but we have come through intact, and with an expanded information technology department and an electronic medical record system that we are learning more about every day.

Finally, the Board of Apalachee Center lost a long-time supporter and member. Judge Rufus Jefferson, who passed away last year, was the first Leon County Juvenile Court Judge. His distinguished career achievements include, among others, serving as president of the Florida Council of Juvenile Court Judges; president of the Florida Council on Crime and Delinquency, chairman of the Florida Bar's Juvenile Rules Committee, and as a member of the Florida Bar's Probate Rules Committee. Judge Jefferson served on Apalachee's Governing Board of Directors for fifty years, from its beginning as the Leon County Mental Health Center, Inc. He first served as Chairman of Apalachee Center's Board of Directors in 1989-90, and was the longest serving member of Apalachee Center's Board of Directors. While mourning the loss of the judge, Apalachee Center also elected five new members of our Governing Board: USN Commander (ret.) Stephen Lanier (Franklin County); Mr. Raymond Capelouto (Leon County); Mr. Sterling Bryant (Leon County); Professor Thomas Joiner, PhD (Leon County); and Mrs. Dee Rush (Leon County).

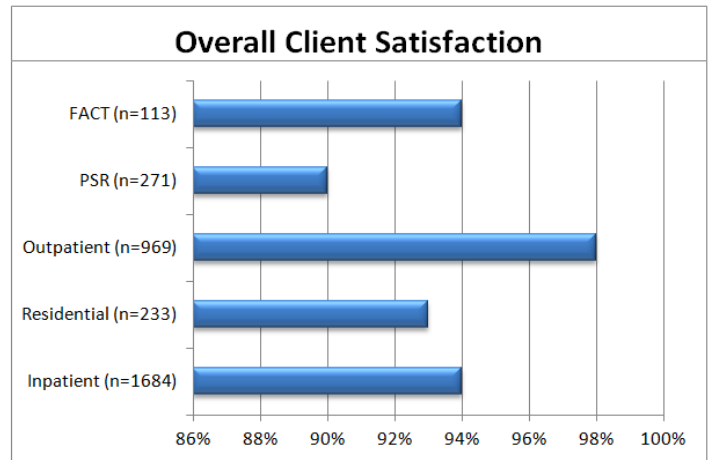
This was a year with some significant challenges, some tragic losses, and some triumphs, but throughout this challenging year, Apalachee continued to provide service to over six thousand residents of the Big Bend area in the best way we knew how, with professionalism and dedication. Apalachee Center's employees and governing board looks forward to continuing to provide these exemplary services to this region in the years to come.

Jay Reeve, PhD  
President and Chief Executive Officer

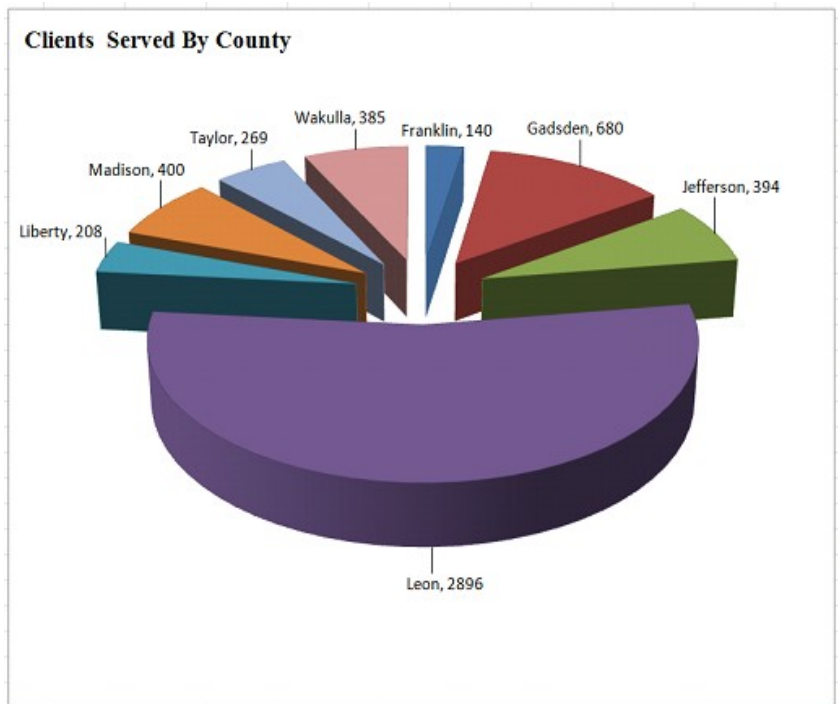
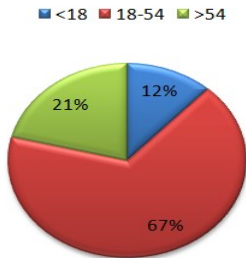
Kim Barnhill, MS, MPH  
Chair, Governing Board of Directors

# Apalachee Center Provides 24-Hour Crisis and Evaluation Services

INPATIENT ADMISSIONS	
Eastside Psychiatric Hospital	1,038
PATH Crisis Stabilization Unit	1,312
PCC Detox Unit	757

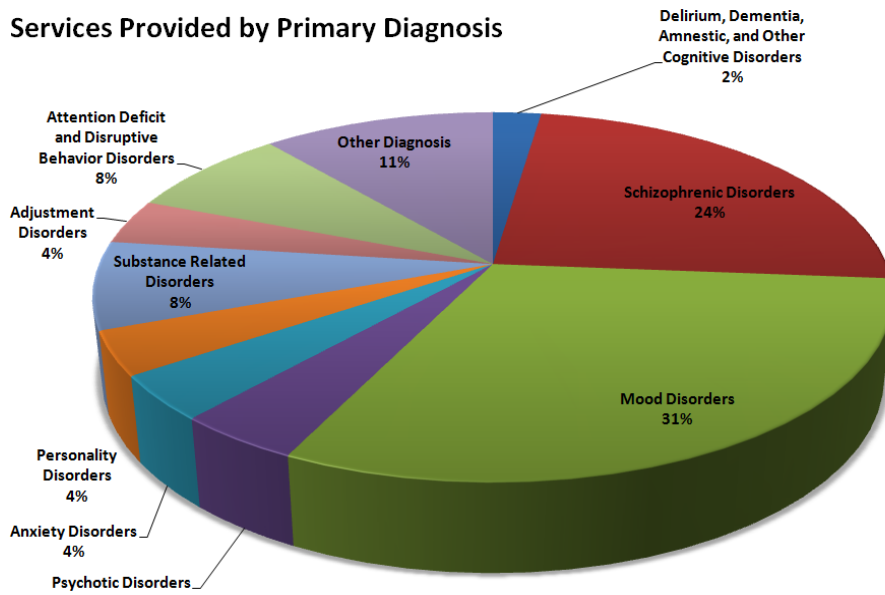


**Clients by Age**



**Need help?** Apalachee Center staff are here to help. Call 24-Hour Evaluations and Admissions at (850) 523-3483 or (800) 342-0774

**Services Provided by Primary Diagnosis**



*Approximately 6,000 Clients Were Served*

## May is Mental Health Awareness Month

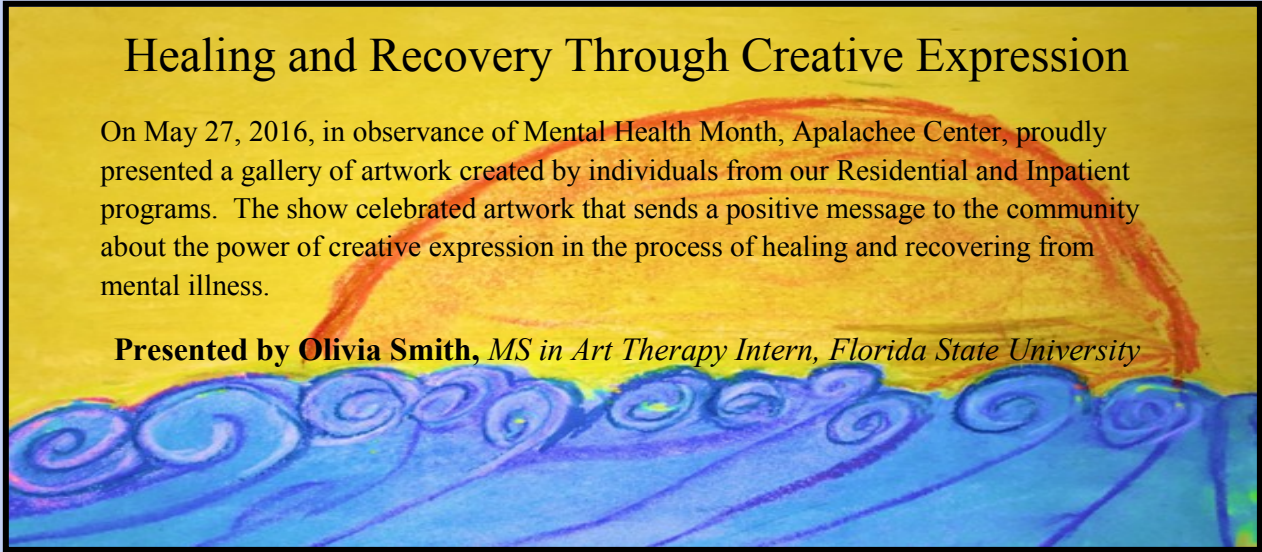
May, 2016, marked the 67th annual Mental Health Awareness Month. Its purpose is to raise awareness about mental illness, such as depression, schizophrenia, and bipolar disorder. It also aims to draw attention to suicide, which can be precipitated by some mental illnesses. In observance of Mental Health Awareness Month, organizations and individuals across the nation are raising awareness, educating communities and fighting the stigma that surrounds mental health issues and treatment.

Apalachee continues to bring awareness to the community in a variety of ways throughout the year. In observance of Mental Health Awareness Month, Apalachee held an art show to showcase the artwork of our clients, sending a positive message to the community.

### Healing and Recovery Through Creative Expression

On May 27, 2016, in observance of Mental Health Month, Apalachee Center, proudly presented a gallery of artwork created by individuals from our Residential and Inpatient programs. The show celebrated artwork that sends a positive message to the community about the power of creative expression in the process of healing and recovering from mental illness.

**Presented by Olivia Smith, MS in Art Therapy Intern, Florida State University**

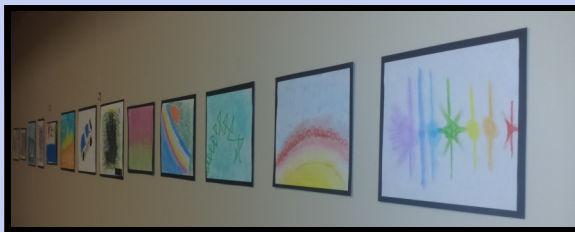


Despite the staggering evidence and rhetoric aimed at helping people understand, many people still don't get that being diagnosed with a mental illness isn't something that's in their control—just like having the flu, or cancer isn't in their control.

Sharing is the key to breaking down negative attitudes and misconceptions surrounding mental illnesses, and to show others that they are not alone in their feelings and their symptoms.

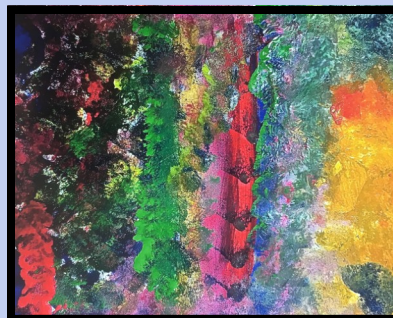


Showcasing some of the *beautiful* artwork created by clients



*“Clients spend their lives being told what they have in their mind is ugly. Art Therapy allows them to take what’s inside of them and express themselves and create something beautiful.”*

*-Dr. Jay Reeve*



Nearly 44 million adults in America, about 1 in 5, experience mental illness in a given year. Of those, 10 million live with a serious mental illness.



# COMMUNITY PARTNERSHIPS & COMMUNITY SERVICE



## Mental Health First Aid

*Mental Health First Aid is Saving Lives*

*Mental Health First Aid = The initial help given to a person showing symptoms of mental illness or in a mental health crisis (severe depression; psychosis; panic attack; suicidal thoughts and behaviors...) until appropriate professional or other help, including peer and family support, can be engaged.*

The Adult Mental Health First Aid (MHFA) training course is an 8 hour certification course that explores the topics of depression, anxiety, psychotic disorders, substance abuse disorders, and eating disorders. Participants learn the steps they can take to provide help to someone experiencing a crisis. If the course is successfully completed, each participant will leave certified in Mental Health First Aid.

Apalachee's certified adult Mental Health First Aid trainer provides trainings throughout the year at Apalachee Center, and in locations throughout the community. On May 13th, a MHFA training was held at the Kearney Center in Tallahassee, training approximately 30 people. Over the course of the year, 60 people in the community have been trained and certified in Mental Health First Aid. To obtain more information, or to register for a MHFA training, contact Kimberly Owens at Apalachee Center, #523-3264.

## Crisis Intervention Training (CIT) for Law Enforcement



Summer 2016 Class hosted by Apalachee Center

Crisis Intervention Training in Tallahassee is sponsored through the collaboration of the Tallahassee Police Department, the office of Court Administration, Apalachee Center, NAMI Tallahassee, Magellan Health Care, and many other volunteers throughout the community.

Crisis Intervention is designed to foster effective intervention between law enforcement and the mentally ill. CIT's major focus is to prevent inappropriate arrests of the mentally ill, and, instead, direct them to treatment within the community.

During the past year, Apalachee Center hosted two Crisis Intervention Trainings at the Leon County campus, with approximately 50 dedicated law enforcement officers of Tallahassee, Leon, Gadsden and Wakulla Counties receiving CIT certification.

## NAMI Tallahassee Partnership



Apalachee Center and NAMI Tallahassee have worked together, in formal community partnership, for several years, with Apalachee staff supporting and participating in NAMI Tallahassee events, one of which was their 1st Annual Blue Bird Run for Brookie B in September 2015. The event honored Brook Bowers who died by suicide in 2012. The Blue Bird Run began to bring the issue of suicide out of the shadows and into the sunshine.

In 2016, the community conversation surrounding suicide loss, prevention, intervention, and postvention has grown stronger.

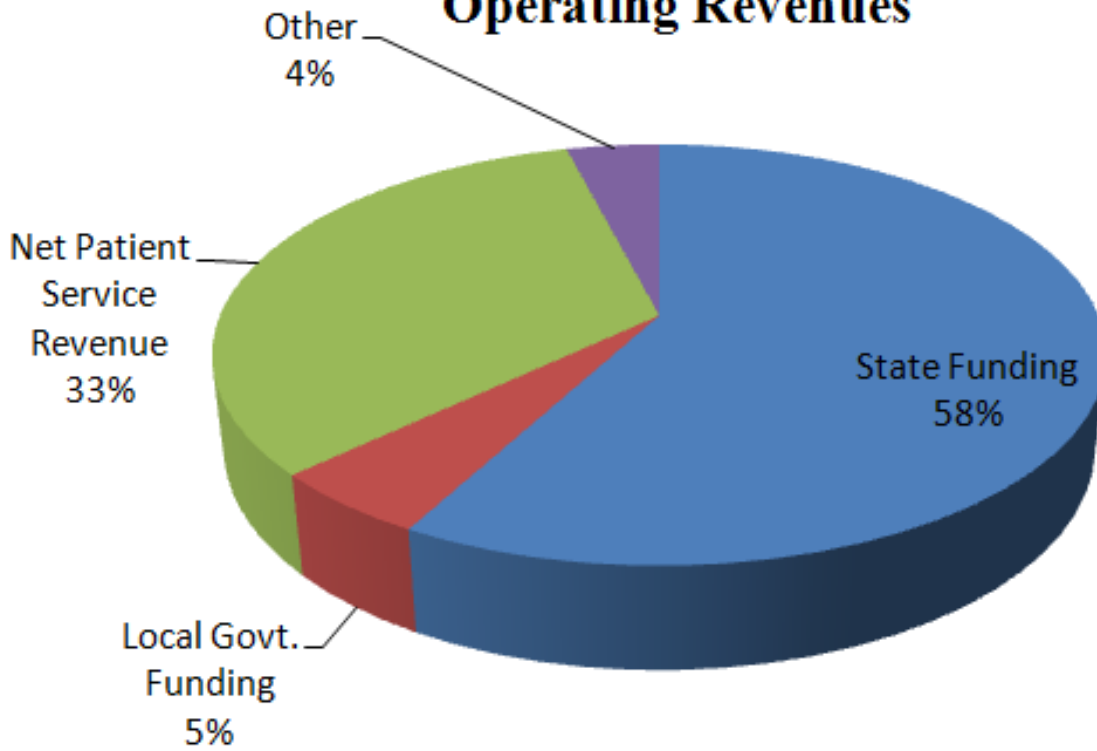
## Brown Bag Lunch Trainings

Each month, Apalachee Center hosts a one-hour Brown Bag Training. These trainings are certified by the Florida Certification Board, qualifying for CEU's, and invitations to the trainings are extended to area community agencies. Apalachee staff have been joined by 52 community members and staff from Big Bend Community Based Care; Refuge House; Magellan Complete Care; NAMI, DCF-SAMH and others. Topics included: Differentiating Diagnoses in Children; Ethics and Boundaries in Mental Health Practice, and Compassion Fatigue, to name a few.

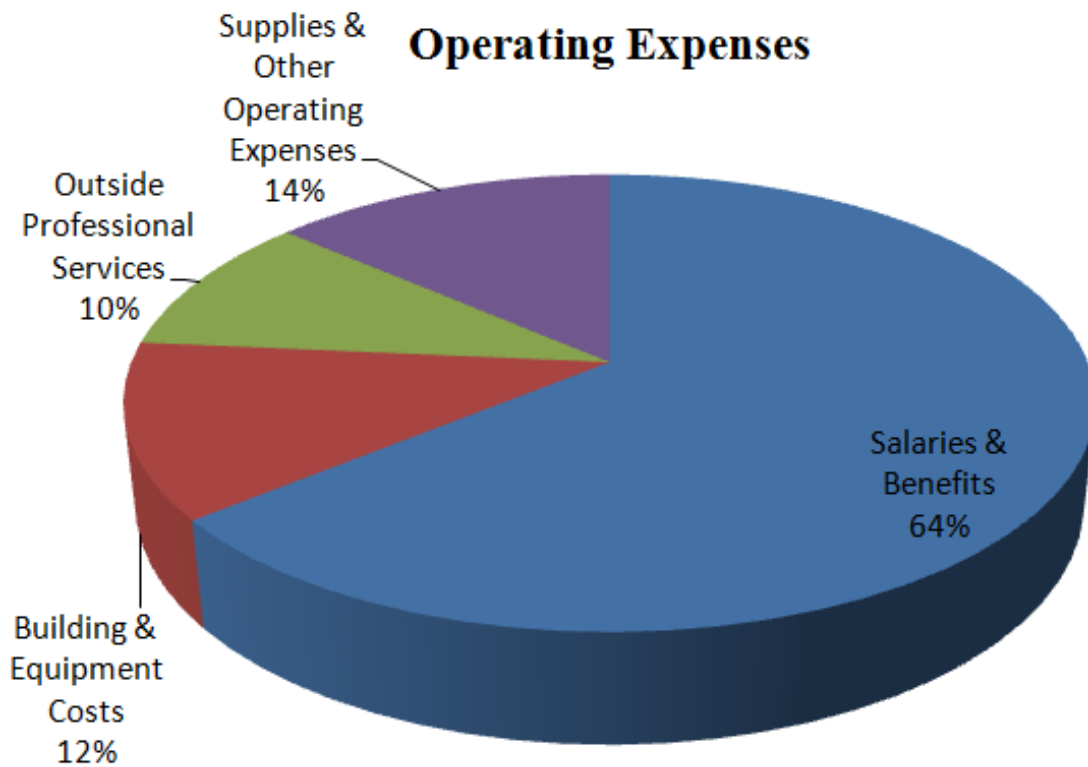
Apalachee staff are dedicated to bringing more awareness to mental health issues and the services we provide. As a result, our employees are active in our communities year-round. These are just a few of the ways we stay involved to promote mental health awareness.

# Fiscal Information

## Operating Revenues



## Operating Expenses





**INPATIENT SERVICES**

2634 Capital Circle, N.E.  
Tallahassee, FL 32308

Eastside Psychiatric Hospital (EPH)  
PATH Crisis Stabilization Unit  
Primary Care Center Detox  
Short-Term Residential Program

**RESIDENTIAL SERVICES**

Transition Home Program, Tallahassee  
Satellite Apartments, Tallahassee  
Leon County Residential Facilities, Tallahassee  
Gadsden County Residential Facilities, Quincy  
Hilltop Residential Services (Group Home), Madison

**OUTPATIENT SERVICES**

**Franklin County**  
159 12th Street  
Apalachicola, FL 32320

**Gadsden County**  
79 LaSalle Path  
Quincy, FL 32351

**Jefferson County**  
1996 S. Jefferson Street  
Monticello, FL 32344

**Leon County**  
2634 Capital Circle, N.E.  
Tallahassee, FL 32308

**Liberty County**  
13888 Northwest County Road 12  
Bristol, FL 32321

**Madison County**  
225 Sumatra Road  
Madison, FL 32340

**Taylor County**  
1421 Old Dixie Highway  
Perry, FL 32348

**Wakulla County**  
43 Oak Street  
Crawfordville, FL 32327

**PRIMARY CARE SERVICES**

Primary medical care to Apalachee clients is available on site at the Leon and Gadsden County Outpatient Clinics.

*Healing Minds & Empowering Lives*



**Program Information**

Apalachicola.....	(850) 653 - 9744
Bristol.....	(850) 643 - 2232
Crawfordville.....	(850) 926 - 5900
Madison.....	(850) 973 - 5124
Monticello .....	(850) 997 - 3958
Perry .....	(850) 584 - 5613
Quincy.....	(850) 875 - 2422
Tallahassee Inpatient.....	(850) 523 - 3300
Tallahassee Outpatient .....	(850) 523 - 3289
TDD Line .....	(850) 523 - 3266
Auto Attendant / Main Line.....	(850) 523 - 3333
.....	(800) 226 - 2931
New Patient Registration .....	(850) 523 - 3308
.....	(866) 472 - 3941
Evaluations & Admissions.....	(850) 523 - 3483
.....	(800) 342 - 0774

For more information, please visit our website at  
**[www.apalacheecenter.org](http://www.apalacheecenter.org)**



Apalachee Center, Inc.  
receives funding from the  
State of Florida, Department of  
Children & Families