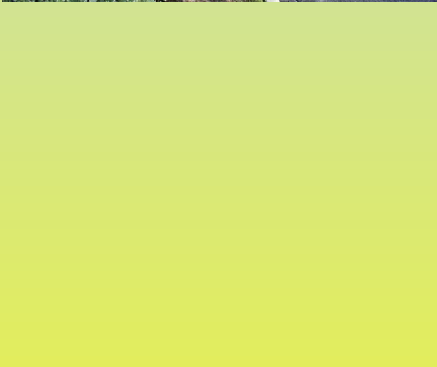
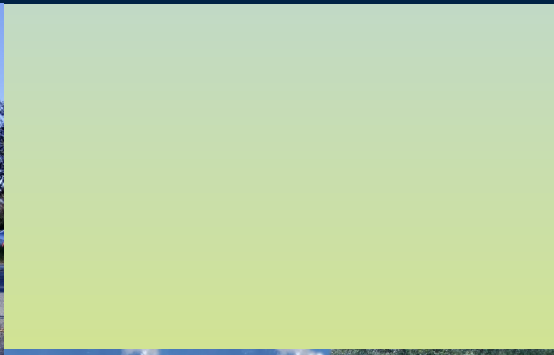




2018 - 2019

Annual Report to the Community

Franklin | Gadsden | Jefferson | Leon | Liberty | Madison | Taylor | Wakulla



Advancing, Expanding, Progressing
Proudly Serving The Community For 71 Years

Our Services

Apalachee Center offers a full continuum of care services, serving clients across the lifespan who are coping with mental illness, substance abuse, emotional and behavioral problems, with a special commitment to serving severely and persistently mentally ill individuals who suffer from schizophrenia and severe mood disorders.

INPATIENT SERVICES

Central Receiving Facility: Provides assessment and referral services 24-hours a day for mental health and substance related crises.

Eastside Psychiatric Hospital

Behavioral Excellence and Care for Children's Health (B.E.A.C.H.) Unit

PATH Crisis Stabilization Unit

Primary Care Center Detox Unit

Short-Term Residential Treatment Program

RESIDENTIAL SERVICES

Transition Home Residential Facility

Madison Group Home Residential Facility

Satellite Apartments

Gadsden County Forensic Residential Facilities
(two 16-bed facilities)

Leon County Forensic Residential Facilities (two 16-bed facilities)

OUTPATIENT RECOVERY SERVICES

Florida Assertive Community Treatment Program (FACT)

Care Management

Psychiatric Services

Primary Care: Provides primary medical care to current Apalachee clients on site at Leon and Gadsden County Outpatient Clinics.

Psychosocial Rehabilitation

Outpatient Children's Services

Outpatient Substance Abuse and Mental Health Counseling

Community Forensic Services

Homeless Project

Drop-In Center

Community Action Teams (CAT)

Mobile Response Team (MRT)

ADDITIONAL SERVICES

Brown Bag Lunch Trainings—Monthly (variety of topics related to mental health & substance abuse)

Crisis Intervention Team (CIT) Training for law enforcement—Apalachee Center is a host site for CIT Trainings which equip law enforcement to handle psychiatric emergencies.

Mental Health First Aid Training — 106 individuals certified in Mental Health First Aid

It is the *Vision* of Apalachee Center to serve as an integral component of the community's healthcare system.

Our *Mission* is to empower persons served to improve the quality of life for themselves and their families through the provision of quality behavioral healthcare with unrelenting attention to clinical excellence and safety.

A Message to the Community

Welcome, and thanks for taking the time to read Apalachee Center's 2018/2019 Report to the Community. As the largest comprehensive behavioral healthcare organization in the Big Bend area, Apalachee Center is dedicated to the mission of helping North Floridians recover from episodes of substance abuse, mental illness, emotional distress, and behavioral challenges every day.

The past year was a year of continued significant expansion and change for Apalachee Center, in the aftermath of the tragic shooting at Marjory Stoneman Douglas High School in February 2018. In an unprecedented legislative action, the Florida legislature authorized funding for behavioral health Mobile Response Teams in every county in Florida. Stakeholders in the Big Bend region have been discussing the need for Mobile Response Teams for years, but without sufficient funding. In the aftermath of this legislation, Apalachee Center applied for and was awarded the contract for a comprehensive mobile response team across the 5500 square mile catchment area of the Big Bend – the largest mobile response team region in the State to that point. Apalachee led the way, again, by pioneering a partnership with our local Managing Entity (Big Bend CBC) and area law enforcement, supported by extensive use of telemedicine, that allowed 24/7 coverage of this vast service area. As of this writing, Apalachee Center Mobile Response teams are leading the region in rapidity of response and diversion from inpatient hospitalization. Apalachee Center's new capacity to respond quickly, both live and virtually, to Big Bend residents in psychiatric crisis has been a positive gamechanger for this region. The use of telemedicine for these teams paralleled Apalachee Center's provision of telemedicine access to the Sheriffs of all eight counties of the Big Bend, in order to facilitate the evaluation of jail detainees without the need for transport.

This year also saw dramatic growth in children's services, with the implementation of two more Community Action Teams (CAT) for this region. Apalachee Center was proud to be awarded the contracts for these teams, serving children, youth and their families with intensive psychiatric, psychotherapeutic and support services on a 24/7 basis in Jefferson, Madison, Taylor, Liberty and Franklin Counties. As of this writing, all three of Apalachee Center's CAT Teams are operating above capacity and serving the children and families of this region. In addition, Apalachee Center opened services onsite in Madison County schools, providing a full array of mental health services for the school district there, and, at the end of 2018/19, had begun to explore the possibility of providing onsite services in Leon County Schools.

Among these exciting developments were some great statewide changes: Governor DeSantis' administration took mental health as a high priority, championed by the Secretaries of AHCA and DCF and, most prominently, First Lady Casey DeSantis. In June 2019, Apalachee Center was proud to host the First Lady for a tour and discussion of mental health issues in Florida. AHCA Secretary Mary Mayhew has also made multiple visits to Apalachee Center, and has emerged as a great advocate for our services.

Continued...

Board of Directors

Denise Hannah

Chair

Lou Miller

Vice Chair

Kim Barnhill

Immediate Past Chair

Stephen Lanier

Member at Large

Sterling Bryant, Jr.

John Dailey

Forrest Davis

Harry Falk

Edwin Fleet

David Harvey

Kenneth Hosford

Oscar Howard

Delorise Rush

Alvin Stauber

James Harold Thompson

Management Team

Jay Reeve, PhD

President, Chief Executive Officer

Sue Conger, MSW

Chief Operations Officer

Teri Grace

Chief Information Officer

Dean Hilton, CPA

Chief Financial Officer

Guy Johnson

Chief Facilities Officer

Candy Landry

Chief Human Resources Officer

Heather Lincicome, LCSW

Chief Liaison Officer

Generoso Masangkay, M.D.

Chief Medical Officer

A Message to the Community

Apalachee Center was at the forefront of local change as well, with the election of longtime Board Member and former Board Chair John Dailey as the Mayor of Tallahassee. Mayor Dailey brought the Florida Conference of Mayors to Apalachee Center to discuss mental health, and to showcase our services. There were other new local program openings as well - following the results of the Mental Health Council of the Big Bend's first White Paper. The White Paper, authored by Professor Heather Flynn, the director of the Center for Behavioral Health Integration at the FSU College of Medicine, was the first epidemiologic analysis of mental illness prevalence in Leon County. This study pointed to a need for more comprehensive services in the Frenchtown area. As such, in June, 2019, Apalachee Center was pleased to cut the ribbon on our first new outpatient clinic in decades – the Apalachee Center at Bethel clinic, developed in concert with the Bethel Missionary Baptist Church located in Frenchtown, at the invitation of, and in consultation with, Reverend Dr. R.B. Holmes, Jr. The new clinic houses Apalachee Center's FACT Team, Homelessness Project, and outpatient staff as well as provides telepsychiatry access for neighborhood residents to psychiatric care within their community.

Along with all the new programs, growth and advancement this year, there was one milestone that stood out. In 2018/2019, Apalachee Center provided services to 7,636 unduplicated clients. That's a new record, after four years of steady annual growth. That means that more residents of the Big Bend than ever are coming to Apalachee Center for their behavioral health and primary care needs. Apalachee Center's employees and governing board looks forward to continuing to provide these exemplary services to this region in the years to come.

Lou Miller

Incoming Chair, Governing Board



Jay Reeve

President and Chief Executive Officer



Denise Hannah

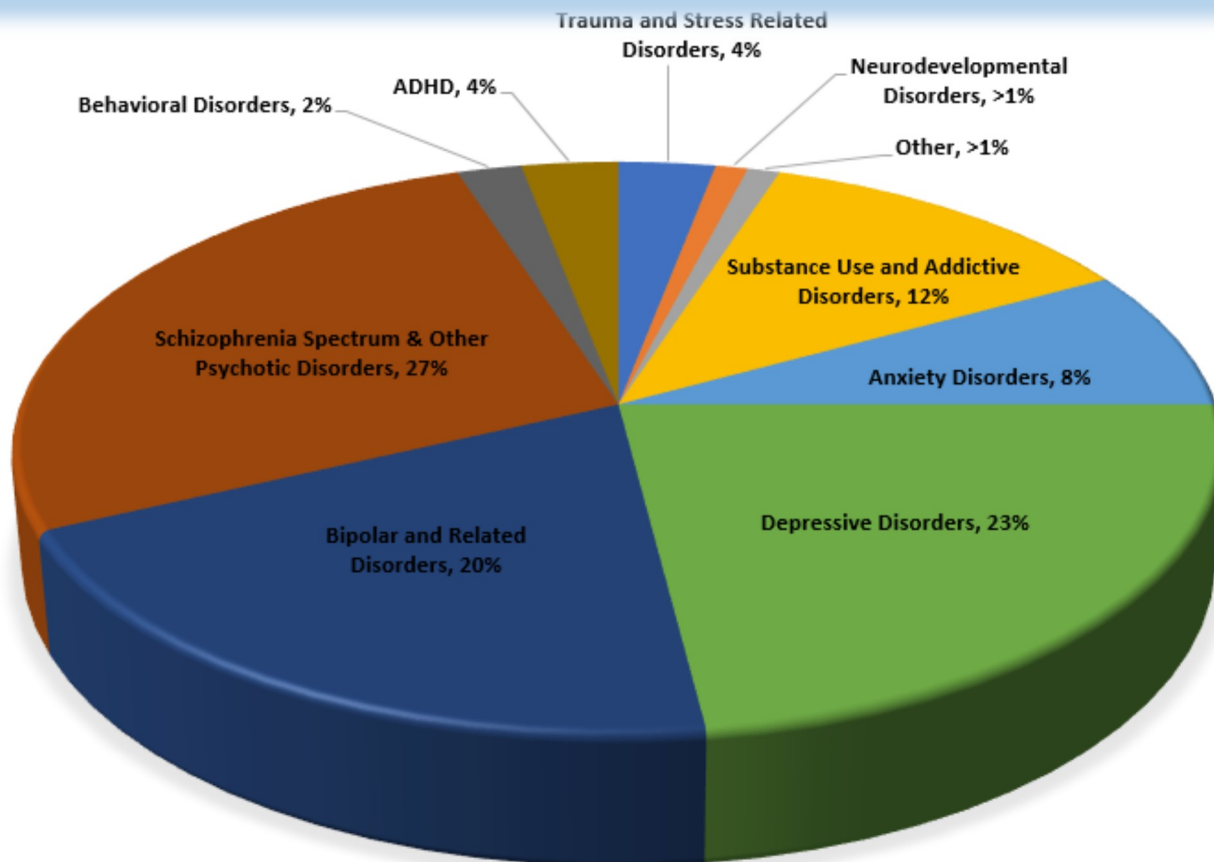
Chair, Governing Board



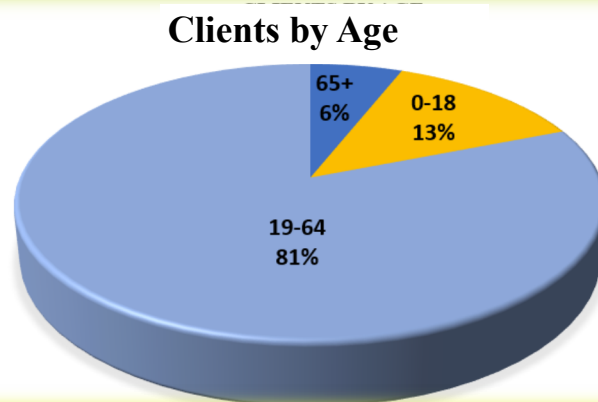
Board Member Mayor John Dailey, Attorney General Ashley Moody, & Dr. Jay Reeve during the Florida Conference of Mayors event at Apalachee Center

Statistical Data for Apalachee Center (Fiscal Year 2018-2019)

Services Provided By Primary Diagnosis



Inpatient Admissions	
Eastside Psychiatric Hospital	1118
PATH Crisis Stabilization Unit	1683
PCC Detox Unit	904
Short-term Residential Treatment	55

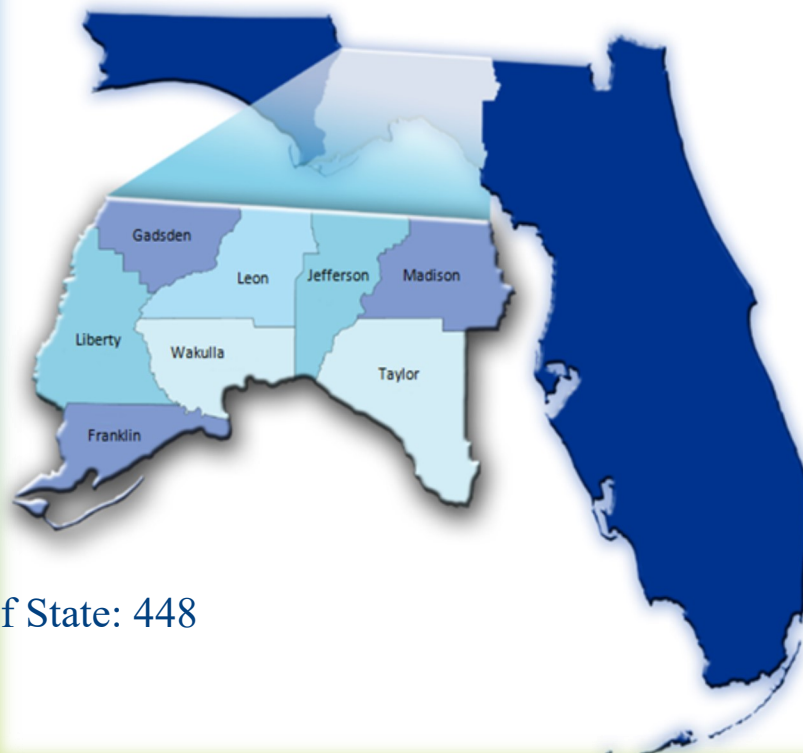


Approximately 7,636 Clients Were Served This Year

Statistical Data for Apalachee Center (Fiscal Year 2018-2019)

CLIENTS BY COUNTY OF RESIDENCE

Franklin: 244
Gadsden: 954
Jefferson: 348
Leon: 3878
Liberty: 219
Madison: 502
Taylor: 397
Wakulla: 646



Other Florida County / Out of State: 448



Mobile Response Team at Apalachee Center

The Mobile Response Team (MRT) is a 24/7 on-call crisis intervention service provided through Apalachee Center, Inc. (ACI) and is primarily designed for youth and young adults aged 25 years and younger. MRT provides alternatives to inpatient treatment when appropriate. Apalachee Center's MRT currently serves all of the counties in our treatment area (Leon, Liberty, Franklin, Gadsden, Jefferson, Madison, Taylor, and Wakulla counties).

The Apalachee Center MRT was created by the 2018 Florida Legislature and included in the Marjory Stoneman Douglas High School Public Safety Act and developed with the following criteria:

- ◆ Respond to requests within a 60-minute timeframe
- ◆ Provide behavioral health crisis-oriented services that are responsive to the individual and family needs
- ◆ Respond to the crisis in the location in which it is occurring (i.e. schools, homes, community locations, etc.)
- ◆ Provide screening, standardized assessments, early identification and linkage to community services
- ◆ Whenever possible include family members
- ◆ Develop a Care Plan
- ◆ Provide care coordination by facilitating the transition to ongoing services through a warm hand-off, including psychiatric evaluation and medication management
- ◆ Ensure process for informed consent and HIPPA compliance measures
- ◆ Promote information sharing and use of innovative technology - Mobile applications, tele-psychiatry, etc.

Apalachee's MRT provides crisis intervention services 24/7 by a team of professionals trained in crisis intervention to provide timely support and services. The team goes where the crisis is occurring to provide intervention regardless of the individual or entity seeking assistance. The Apalachee MRT provides care in a community-based setting and increases opportunities to stabilize individuals in the least restrictive setting and avoid possible jail, hospital, or emergency room utilization. Beyond working to resolve the crisis situation, the team also works with the individual and their family to identify and create strategies for effectively dealing with possible future crisis, and provides next business day appointments following the initial contact for those who desire them.

Apalachee's MRT can be initiated in multiple ways. **Anyone can initiate the process by calling the MRT's direct number at: (800) 342-0774 any time, day or night.** Law enforcement may also initiate by calling the same number or by connecting via provided tablets to begin a face-to-face telehealth session.



Pictured left are the following Mobile Response Team members:

Ava Okten, Robert Stewart (MRT Team Leader) and Nicholas Presley.

Community Action Teams (CAT)

Apalachee Center, Inc. was successful in obtaining two new CAT Teams for our catchment area. We now have CAT Teams available in every county in our service area: Franklin, Gadsden, Jefferson, Leon, Liberty, Madison, Taylor and Wakulla.

The Community Action Teams (CAT), are intensive community based services provided through Apalachee Center Inc. (ACI) for youths aged 11 to 21 and their families. The criteria established for admission to CAT are youths who have been diagnosed with a mental health disorder or co-occurring substance diagnosis with one or more of the accompanying characteristics:

- ⇒ have not benefitted from less intense forms of treatment or
- ⇒ have multiple inpatient crisis stabilization episodes or
- ⇒ are involved with law enforcement or the juvenile justice system or
- ⇒ are at risk for out-of-home placement/involved with the child welfare system or
- ⇒ have disruptive school behavior and/or suspensions.

CAT is a voluntary service which emphasizes family and youth perspectives in treatment, seeks to build natural supports, connects the family with community resources, and individualizes treatment to the specific strengths and needs of the family. CAT has served approximately 173 individuals since its inception in 2017. The three teams include: one serving Leon, Gadsden and Wakulla counties; one serving Madison, Jefferson and Taylor counties, and one serving Franklin and Liberty counties. Each team consists of a Licensed Team Leader, Care Managers, Masters Level Therapists, Therapeutic Mentors, and a Staff Assistant.

CAT provides some services not provided by less intensive outpatient services. CAT has a 24/7 crisis line which allows team members to be deployed when necessary to avert crisis stabilization episodes or law enforcement involvement. CAT also has the unique ability to provide respite care to fatigued caregivers in some families. Respite services entails providing short-term supervision of a youth away from the family to offer temporary relief as a planned event or to improve family stability in a time of crisis for a maximum of four hours a day. Since CAT can accept clients regardless of their insurance status, CAT can increase access to the needed level of services for some who otherwise might encounter that as a barrier.

CAT serves a vital role for providing treatment services in the community because it acts as a “step-up” from traditional outpatient services when little or no progress is being made or a “step-down” from a long-term placement, such as a residential program. Since the CAT focus is on keeping youths in the community and keeping families together, CAT can substantially improve outcomes for families and reduce costs by reducing the need for residential services such as Statewide Inpatient Psychiatric programs (SIPPs), Department of Juvenile Justice Detention facilities, and DCF group and foster care placements.



Apalachee Center at Bethel



Apalachee Center has partnered with Bethel Missionary Baptist Church and Reverend Dr. R.B. Holmes, Jr. to bring mental health services to the Frenchtown area. This new facility will provide access to individuals that are in need of psychiatric care, therapy, counseling, and other health services. Apalachee Center at Bethel opened in early July and patients can now receive case management, psychiatric care and other services at the Bethel site. Apalachee Center at Bethel is also now home to the Florida Assertive Community Treatment Team. The FACT Team, as it's called, operates 24/7, 365 days a year, as a hospital without walls for individuals dealing with serious mental illness. For those individuals at risk of hospitalization because of their serious brain illness, FACT provides medicine, counseling, housing assistance and emergency care any time, day or night. Many of the FACT Team's clients live within a mile or two of Bethel, and part of Apalachee Center's aim in this partnership was to make access easier for those clients.

There's another specialty program that's very important to Apalachee Center and this community, and that's the Homelessness project. Although the Shelter is no longer located in Frenchtown, there are still far too many individuals who go without homes in this community. For many years, Apalachee Center has provided mental health services to homeless individuals through a federal grant. Although Apalachee will continue to be onsite at the Kearney Center five days a week, the Homelessness Project staff will also have offices here at the Bethel site.

This will allow our outreach staff to identify folks in this community who need to be connected with mental health services. Apalachee Center is thrilled to have opened its first new outpatient clinic at Bethel and in the Frenchtown Community.



Baker Act Court



After many years of hard work by Apalachee Center, Leon County Courts, and our partner agencies at CRMC and TMH, Baker Act Court is now held at Apalachee Center, instead of at the Leon County Courthouse. This allows for a far greater degree of safety and comfort for our patients and their families, as well as convenience for our staff and we are grateful to the Courts for making it possible. Baker Act Court is held twice a week, usually on Tuesday and Thursday mornings. The Baker Act Court is held in the CAT conference room with the CAT waiting area reserved for families during court times.

Governing Board Annual Meeting

At the Annual Board Meeting in June, employees are recognized for their long-term service; the Leadership Academy members receive their Certificates of Completion, and the John Convertino Award nominees are recognized and the winner of this award is announced.



Pictured : (L-R) are the Leadership Academy members with Dr. Jay Reeve; Lou Miller, Incoming Board Chairperson; Denise Hannah, Chair; Sarah Bishop; Stephanie Luckie and Kyle Nolan

John Convertino Award of Excellence

John Convertino was an outstanding Apalachee Center leader for 26 years. Beginning his Apalachee career in 1980, John provided a model of unfailing integrity, quality focus, and caring for his entire community, and was an integral part of the Apalachee team until his untimely death in 2009. In his 14 years as Chief Administrative Officer, he set the standard for thoughtful, competent, and fair workplace performance. To honor his memory, Apalachee Center's Board of Directors presents the John Convertino Award of Excellence to the employee who exemplifies his work at the end of each fiscal year. This year's nominees were Rebecca Guarino, Staff Assistant/Office Manager, Wakulla County and Catherine Munroe, Certified Peer Specialist, Leon County Outpatient Program. Catherine Munroe was this year's winner.



Rebecca Guarino, accepting her award as nominee for the John Convertino Award of Excellence. (L-R) Lou Miller, Incoming Chairperson; Denise Hannah, Chair; Dr. Jay Reeve, CEO; Calonie Pitts, Program Supervisor, Leon County Outpatient Program and Rebecca Guarino.

Catherine Munroe was presented with the John Convertino Award on July 16, 2019 as she was unable to attend the Annual Board Meeting on June 19th to be recognized and presented with this prestigious award.



Catherine stated it was an honor to receive this award, and thanked everyone for their support, especially her supervisor, Calonie Pitts, and her mentor for the past 10 years, Beth Dees.

Pictured (L-R) are: Calonie Pitts, Program Supervisor for Leon Case Management & Children's Outpatient; Beth Dees, Peer Specialist Coordinator; Catherine Munroe and Dr. Jay Reeve.

Apalachee Center Nurse of Excellence

Apalachee Center is proud to recognize the 2019 Nurse of Excellence, Stuart Gamble, RN. Stuart is a proud nursing graduate of Chipola College and Apalachee Center was fortunate to employ him with his first job in nursing. Stuart is an RN on our Community Action Team focusing on 6 of our outlying counties. He and his team are available 24/7 providing a full range of services to clients age 11-21 who have failed at less intense forms of treatment or have had multiple crisis episodes involved with law enforcement, juvenile justice systems, and/or child welfare. As the only RN on this team he has been responsible for a great variety of nursing responsibilities. One of his most outstanding performances was during Hurricane Michael. Clients living in an assisted living facility in Bristol were unable to receive their scheduled injections at their primary care physician's office which was closed due to the storm. Stuart volunteered to visit the ALF himself to administer the injections. This ensured that the clients scheduled medications were not disrupted possibly preventing relapse and hospitalization.



Community Partnerships/Relations



Department of Children & Families Secretary Chad Poppell & Dr. Jay Reeve



Board Member Steve Lanier, Dr. Jay Reeve, Representative Jason Shoaf, Immediate Past Chair Board Member Kim Barnhill, Board Member Speaker James Harold Thompson & Adam Roberts



Dr. Jay Reeve & Board Member Mayor John Dailey taken at the Apalachee Center



Alex Vergara, Principal Amy Alvis, Dr. Jay Reeve, & Sue Conger at Heritage Trails School



Dr. Gene Masangkay, Sue Conger, AHCA Secretary Mary Mayhew, Dr. Jay Reeve, & Dean Hilton



Hitomi Izawa, Sue Conger, & Dr. Jay Reeve visiting a Disaster Recovery Center in Liberty County



Dr. Jay Reeve & Senator Bill Montford at the grand opening of the "Apalachee Center at Bethel" event



Dr. Jay Reeve speaking at Leon County Sheriff Walt McNeil's "ALL IN LEON Initiative" announcement

Community Partnerships/Relations



Mayor John Dailey, Leon County Commissioner Diane Cox-Williams, DCF Ass. Sec. Rodney Moore, Dr. Jay Reeve, Leon County Commissioner Elaine Bryant, Senator Bill Montford & Reverend Dr. R.B. Holmes, Jr. at the Apalachee Center at Bethel event



Dr. Jay Reeve & Leon County Sheriff Walt McNeil during a visit to the sheriff's office



Dr. Jay Reeve & Nancy O'Farrell (President of NAMI Tallahassee) taken during NAMI's annual Bluebird Run

Below:

Board Member Mayor John Dailey, City of Tallahassee Commissioner Dianne Williams-Cox, DCF Asst. Sec. Rodney Moore, Dr. Jay Reeve, Senator Bill Montford, & Rev. Dr. R.B. Holmes, Jr.



Reverend Dr. R.B. Holmes, Jr. & Dr. Jay Reeve during the Capital Outlook Awards ceremony where Apalachee Center was named "Organization of the Year"



Left:

Dr. Jay Reeve, New Orleans Saints Running Back, Javorius "Buck" Allen & Immediate Past Chair Board Member Kim Barnhill at the "Buck Mission Day"

Right:

Representative Loranne Ausley during a visit to Apalachee Center



Project H.O.P.E.



Project H.O.P.E. is an outreach program that serves 3 counties (Gadsden, Liberty and Franklin) to deliver the federally funded crisis counseling program to help these communities recover after the impact of Hurricane Michael. The services this team provides are community based and often are performed in survivor's homes and communities. The focus of the team is to help people in the affected counties/communities understand their personal reactions, helping to plan action steps and solutions to cope with losses by providing supportive crisis counseling, public education, development of coping skills, and linkage to appropriate resources.

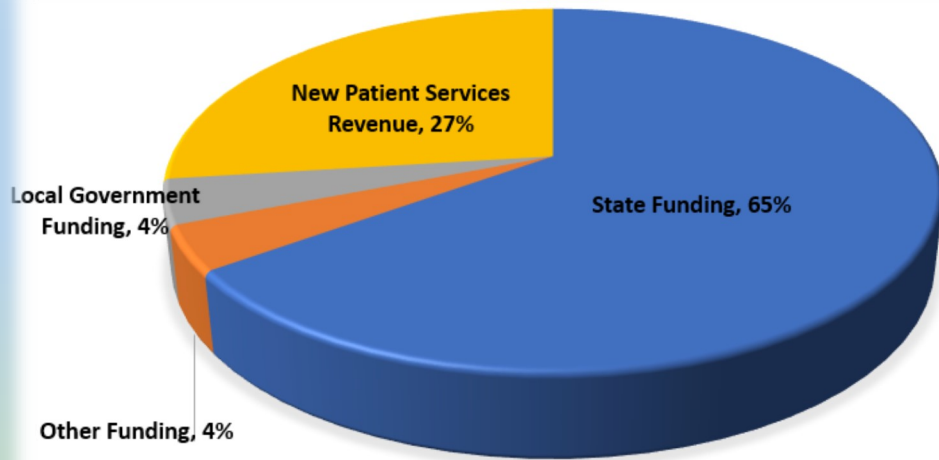
Project H.O.P.E. further helps survivors of natural disasters identify their inner strengths and resiliency in order to help them prioritize needs, navigate community resources, and sort through their thoughts and feelings. Additionally, Project H.O.P.E. assists with the following:

- Individual outreach
- Informational Support
- Community Support Group Development
- Public Education
- Community Networking
- Support Resource Linkage
- Assessment
- Referral

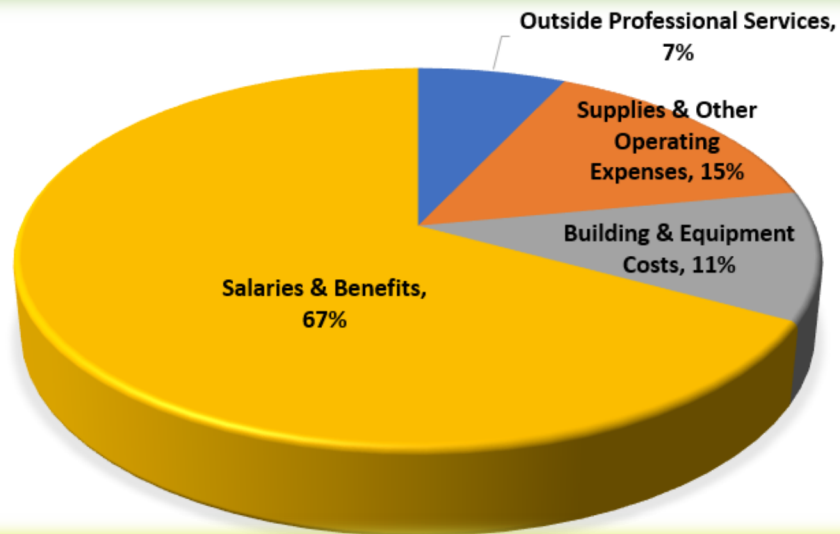


Fiscal Information

Operating Revenues



Operating Expenses



Want to help?

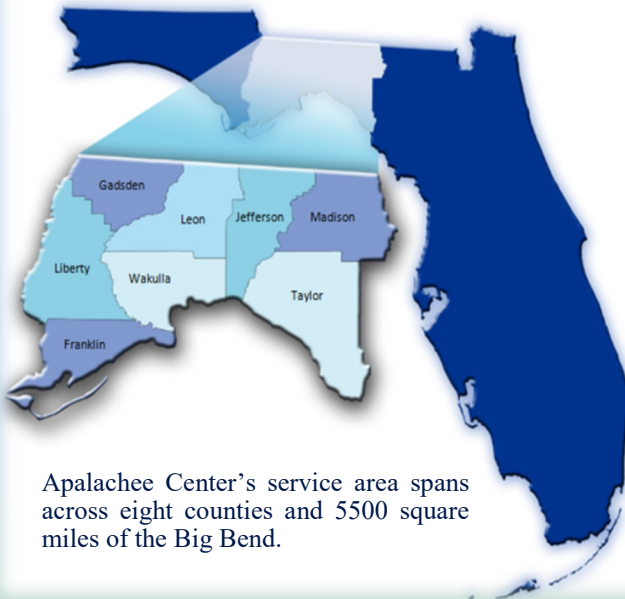
Your support is important to Apalachee Center, Inc.

Here is how to make a difference:

Learn About Our Services: visit www.apalacheecenter.org

Be and Advocate: Tell your legislators why you value Apalachee's services

Donate: Send a check to Apalachee Center, Inc., 2634-J Capital Circle N.E., Tallahassee, FL 32308



INPATIENT SERVICES

2634 Capital Circle, N.E.
Tallahassee, FL 32308

Eastside Psychiatric Hospital (EPH)
PATH Crisis Stabilization Unit
Primary Care Center Detox
Short-Term Residential Program

RESIDENTIAL SERVICES

Transition Home Program, Tallahassee
Satellite Apartments, Tallahassee
Leon County Forensic Residential Facilities, Tallahassee
Gadsden County Forensic Residential Facilities, Quincy
Hilltop Residential Services (Group Home), Madison

OUTPATIENT SERVICES

Franklin County
159 12th Street | Apalachicola, FL 32320
(850) 653-9744

Gadsden County
79 LaSalle Path | Quincy, FL 32351
(850) 875-2422

Jefferson County
1996 S. Jefferson Street | Monticello, FL 32344
(850) 997-3958

Leon County—MAIN CAMPUS
2634 Capital Circle, N.E. | Tallahassee, FL 32308
(850) 523-3333

Leon County—BETHEL
471 W. Tennessee Street | Tallahassee, FL 32301
(850) 523-3269

Liberty County
13888 Northwest County Road 12 | Bristol, FL 32321
(850) 643-2232

Madison County
225 Sumatra Road | Madison, FL 32340
(850) 973-5124

Taylor County
1421 Old Dixie Highway | Perry, FL 32348
(850) 584-5613

Wakulla County
43 Oak Street | Crawfordville, FL 32327
(850) 926-5900

PRIMARY CARE SERVICES

Primary medical care for Apalachee clients is available on site at the Leon and Gadsden County Outpatient Clinics.

Tallahassee Inpatient.....(850) 523-3300

Tallahassee Outpatient.....(850) 523-3289

TDD Line.....(850) 523-3266

Auto Attendant/Main Line (850) 523-3333

.....(800) 226-2931

New Patient Registration...(850) 523-3308

.....(866) 472-3941

Central Receiving Facility (850) 523-3483

.....(800) 342-0774

Mobile Response Team....(800) 342-0774

Services accredited by the Joint Commission on Accreditation of Healthcare Organizations.

